

### Individual Directed Retreats:

October 9-November 5 2015  
October 11-November 6 2016

There may be opportunity to come for a directed or undirected retreat of a shorter duration. You can choose the dates most suitable to your schedule during any of the directed retreats listed elsewhere in this brochure. Acceptance is based on the availability of a spiritual director and/or room.

### Daily Cost in Cdn. Funds

**\$99 (Directed)/ \$86 (Undirected)**

**To apply** for these programs, complete the online application form at [loyolahouse.com](http://loyolahouse.com) under Application. A downloadable form may also be completed, from the application webpage.

### Checking In

Unless otherwise noted in the schedule, each program begins promptly at 8pm on the first day and ends at 1pm on the last day. You may arrive between 6:30-7:45pm.

### Retreats and Programs

It is our intention to ensure the financial sustainability of the retreats and programs we provide at the Ignatius Jesuit Centre.

Cancellations represent an expense to the Centre and a lost opportunity for others to participate in the retreats and programs.

### Payment Policy

Payment in full must be received in order to secure your booking. Cancellations & refunds are managed by the Registrar on an individual basis.

### Fees

The costs of all programs are in Canadian funds (Cdn.). Payment may be made by cash, cheque, money order, VISA, MasterCard, online or bank draft in Canadian dollars payable to the Ignatius Jesuit Centre. A 10% fee will apply to payments received in US funds either by cash or cheque.

The fees for all retreats include room and board, sessions with a spiritual director, daily liturgy, all required materials, and access to the property.

**Loyola House** is a renewal and training centre whose focus derives from Ignatian Spirituality. Our team ministry expresses itself both individually and corporately. Through Ignatian discernment we seek to empower both individuals and groups within the context of their own experience by attentiveness to: their growth, ability to evaluate the signs of the times, and leadership potential.

In this way, we identify ourselves with Christ and prove our longing for the reign of God by fostering unity, mutuality and inclusiveness of all people.

**Loyola House** is located one km. north of Guelph, Ontario on over 600 acres of beautiful farmland, with rolling hills, woods and wetlands – all of it accessible to those who take part in our programs.

For more information, contact

**The Registrar, Loyola House  
Ignatius Jesuit Centre**

5420 Hwy 6 North, Guelph ON N1H 6J2  
**519 824 1250 ext. 266**

[registration@ignatiusguelph.ca](mailto:registration@ignatiusguelph.ca)  
or visit [loyolahouse.com](http://loyolahouse.com)

*Printed on 100% recycled paper*

# Loyola House Directed Retreats 2015-2016

*“Be still and know  
that I am God.” (Psalm 46:10)*



**Ignatius Jesuit Centre**  
*A Place of Peace*

**Loyola House  
Retreat & Training Centre**

[ignatiusguelph.ca](http://ignatiusguelph.ca) [loyolahouse.com](http://loyolahouse.com)

## Directed Retreats

**As part of a welcome** to Loyola House we would like to share with you a description of a directed retreat. Like most retreats, the environment will be one of prayerfulness and silence; like all retreats the focus is upon the presence and activity of God.

**In a directed retreat** a director is assigned to each retreatant. In meeting the director each day the retreatant is aided in:

- 1) noticing the reality of God's presence and activity;
- 2) coming to trust what has been noticed;
- 3) responding to this presence and activity.

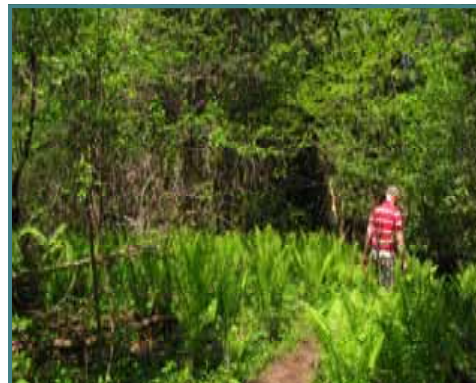
**Prayerful reflection** with sacred Scripture in an environment of complete silence is the usual setting for this process. There is no pre-set pattern for a directed retreat. The director and the retreatant try to be sensitive and responsive to where the retreatant is in his or her journey with God.

**The director's role** is to support the retreatant in the movements of his or her journey as they emerge in the prayer experience of the retreatant. God's

involvement with us is subtle and delicate, hence the environment of prayerful silence throughout the experience. As you prepare to come for your retreat, we invite you to be open and generous in your desire to spend these days with the Lord.

**Retreatants often find** it helpful to bring items with them that help them to be centered, relaxed and still. For one person it might be a sketch pad; for another needlepoint; for another, cross-country skis or a kite might be a good companion. Some may wish to bring an iPod with their favourite music for relaxation. The criterion for anything of this sort should be "whatever helps you to relax and be peaceful before the Lord."

**Loyola House is known** for providing a simple and comfortable environment for your retreat. We do not attempt to provide the luxuries and conveniences of a hotel or spa. This allows us to ensure that our program fees are affordable to a wide range of people. It also fits with our desire to offer you an environment which helps you to focus on your relationship with God.



## DATES FOR 2015-2016

### Directed Prayer Weekend Retreat

2015 November 27-29

2016 February 19-21  
March 4-6  
November 25-27  
**Cost: \$260 Cdn.**

### 5-Day Directed Retreat

2016 January 15-20 \*  
July 8-13  
**Cost: \$495 Cdn.**

### 8-Day Directed Retreats

2015 August 1-9  
August 12-20  
August 22-30

2016 January 27-February 4 \*  
February 9-17 (1/2 price for  
new retreatants)  
May 24-June 1  
June 22-30  
July 21-29  
August 1-9  
August 11-19  
August 22-30  
**Cost: \$792 Cdn.**

### 8-Day Directed Easter Retreat

2016 March 19-27  
**Cost: \$792 Cdn.**

\* *Space is limited*

*See overleaf for Individual Retreats*