

# How to Get to Ignatius Farm

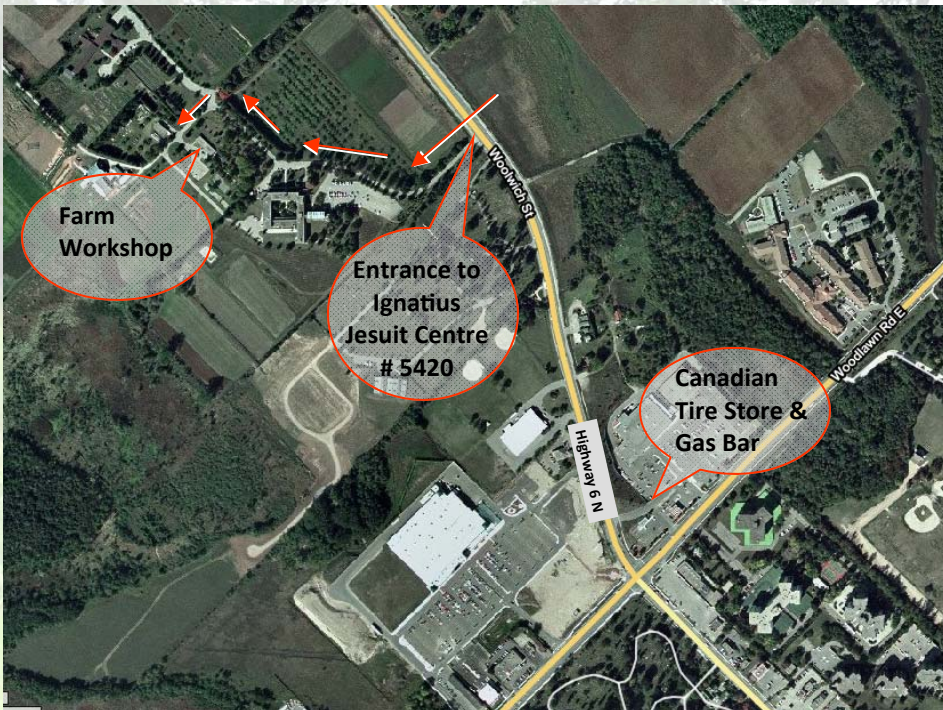
Ignatius Jesuit Centre  
5420 Hwy 6 North  
Guelph, ON N1H 6J2 Canada

## From Guelph:

- From downtown, take Woolwich Street north out of Guelph until it becomes Highway #6 North after crossing Woodlawn Rd.
- Our driveway is 0.4 km or 1 min on left after crossing Woodlawn Rd (#5420).
- Once on Ignatius Jesuit Centre property, follow signs to the Farm Workshop
- **Average driving time from downtown Guelph: 5 minutes**
- **Average cycling time from downtown Guelph: 15 minutes**

## From Kitchener-Waterloo:

- Take Highway #7 (Victoria Street North) heading east out of K-W
- As you come into Guelph, Highway 7 east becomes Woodlawn Rd W
- Continue straight on Woodlawn Rd W when it becomes the continuation of Highway 6 (do not turn south with Highway 7)
- Travel 2.4 km or 3 minutes
- Turn left at Highway 6 N (Woolwich Street).
- Our driveway is 0.4 km or 1 min on left (#5420)
- Once on Ignatius Jesuit Centre property, follow signs to the Farm Workshop
- **Average driving time from downtown Kitchener: 25 minutes**



## From Toronto:

- Take Highway 401 West out of Toronto
- Take exit 295 to merge onto Highway 6 North toward Guelph
- Travel 15.8 km or 16 minutes
- Turn right onto Woodlawn Rd W (continuation of Highway 6)
- Travel 2.4 km or 3 minutes
- Turn left at Woolwich Street or Highway 6 N (continuation of Highway 6).
- Our driveway is 0.4 km or 1 min on left (#5420)
- Once on Ignatius Jesuit Centre property, follow signs to the Farm Workshop
- **Average driving time from Toronto airport: 60 minutes**



**Ignatius Jesuit Centre**  
*A Place of Peace*

519.824.1250  
[ignatiusguelph.ca](http://ignatiusguelph.ca)